

TOUCHBOLT™ ASSEMBLY (TBA)



STANDARD FEATURES

The Touchbolt™ Assembly is designed to interface with the following Easter-Owens products:

- TBM5-TERM Dry Contact Control Module
- ELCML-3 Lighting Modules (120-277VAC Unit)

The Panel Mount TBA is designed to mount in a panel of varying thickness, up to 1/2" thick. The Panel Mount TBA consists of:

- Stainless steel carriage bolt
- (2) nuts
- Front insulating bushing
- Rear insulating bushing
- Uninsulated wire lug

The Thru Wall Mount TBA is used when the Touchbolt™ is placed in a wall such as a masonry wall. The Wall Mount TBA consists of:

- Stainless steel carriage bolt
- (2) nuts
- Front insulating bushing
- Rear insulating bushing
- Uninsulated wire lug
- Insulating tube

The Fixture Mount TBA is used in conjunction with the TBM5-TERM Dry Contact Module. The Fixture Mount TBA consists of:

- Stainless steel carriage bolt
- (2) nuts
- Front insulating bushing
- Rear insulating washer
- Uninsulated wire lug

Bolt sizes are 1/4"-20 and 1/2"-13.

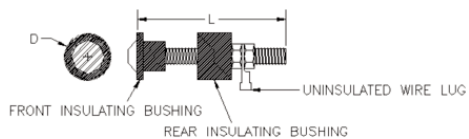
Lengths range from 1.00" to 10" long, custom sizes available.

Stainless steel bolt and hardware standard.

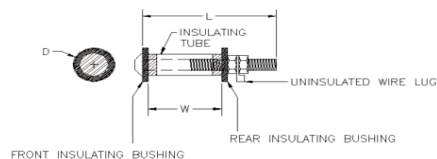
Extremely rugged and highly resistant to vandalism.

Wire range of wire lug is #14-16 AWG.

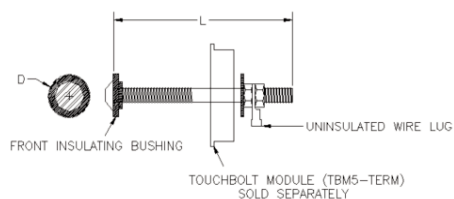
PANEL MOUNT



THROUGH WALL MOUNT



FIXTURE MOUNT







Part #	Stock #	Description	Length (L)	Wall Thickness (W)	Diameter (D)	Drill Size	Application
TBAWS130600*	501071	1/2-13 x 6.00 SS TBA	6.00"	4.00	1.500	1/2" Wall 1.00"	For Walls 4" Thick
TBAWS130800*	501073	1/2-13 x 8.00 SS TBA	8.00"	6.00	1.500	1/2" Wall 1.00"	For Walls 6" Thick
TBAWS131000*	501070	1/2-13 x 10.00 SS TBA	10.00"	8.00	1.500	1/2" Wall 1.00"	For Walls 8" Thick
TBAWS200175*	501065	1/4-20 x 1.75 SS TBA	1.75"	n/a	1.000	1/4" Fixture .438"	14ga - 11ga Plates
TBAPS200175*	501068	1/4-20 x 1.75 SS TBA	1.75"	n/a	1.000	1/4" Panel .500"	Panel Thickness Up to 1/4" Thick
TBAPS130250*	501066	1/2-13 x 2.50 SS TBA	2.50"	n/a	1.500	1/2" Panel .875"	Panel Thickness Up to 1/2" Thick

*Please note that the above chart is a list of the TBA's we stock. If you require a different length, please consult the factory.

ORDERING INFORMATION

For Touchbolt™ Assemblies, please fill out the form below. All custom inquires, please consult the factory.

MODEL No. TBA -  **S***   

MOUNTING METHOD	BOLT SIZE	BOLT LENGTH (in)
P = Panel	20 = 1/4"-20 Bolt	0100 = 1.00"
W = Wall	13 = 1/2"-13 Bolt	0175 = 1.75"
F = Fixture		0200 = 2.00"
		0250 = 2.50"
		0300 = 3.00"
		0400 = 4.00"
		0500 = 5.00"
		0600 = 6.00"
		0700 = 7.00"
		0800 = 8.00"
		0900 = 9.00"
*STAINLESS STEEL BOLT		1000 = 10.00"



HEADQUARTERS

6692 Fig Street
Arvada, Co 80004

Phone: 303.431.0111
Fax: 303.424.2040

EASTER-OWENS.COM

CONTACT US FOR PROJECT
REFERENCE INFORMATION



CALL TOLL FREE: **1.866.204.3707**